

Megabit Modem 300S

High-Performance
SDSL Modem



The Megabit Modem® 300S is a high-performance SDSL modem that connects individual power users or small LAN environments to a frames-over-SDSL service. The 300S may be used “back to back” with another 300S for simple LAN extension applications, or it may be used with the Avidia® System AV421 24-port SDSL module for high-density service provider applications.

ADC's rate-selectable modems enable the user to manually choose transmission speed in order to obtain the best possible data rate for distance and line condition. Typically, subscribers close to the provider's point of presence will receive the highest data rate available, while subscribers far away will still be reachable at lower rates.

Features:

- Symmetric operation up to 2.048 Mbps
- 10BASE-T Ethernet port
- High-performance Ethernet bridging: dynamically learns up to 8,192 addresses
- Complete DSLview™ network management LEDs provide at-a-glance status of modem and network connections
- User-selectable data rate control

Applications

Individual Internet Applications

Home Internet access: The 300S can be used to provide very high speed Internet access to home power users and telecommuters.

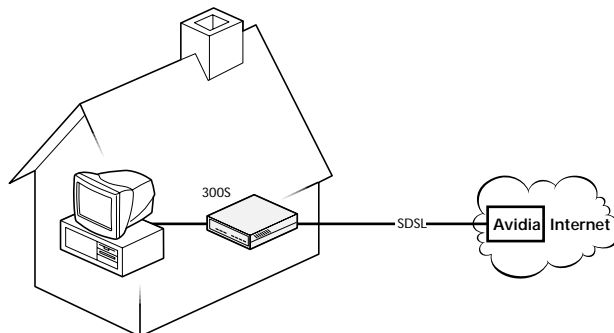


Figure 1: Individual User Internet Access

Remote Office Applications

Remote office network connectivity to the central site: remote offices can simply connect the 300S to their LAN and use the symmetric SDSL service to tap into their corporate network.

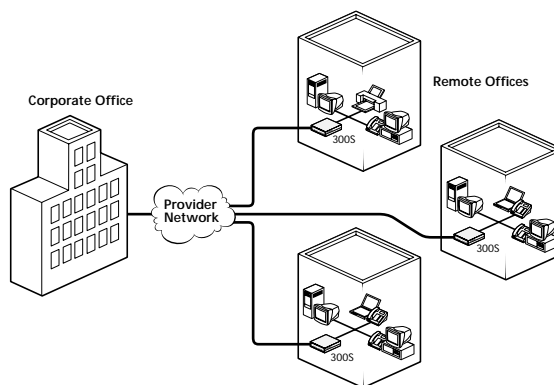


Figure 2: Remote Office Applications

Campus Applications

Campus networks: within a private network the 300S may be used to connect LANs in separate buildings.

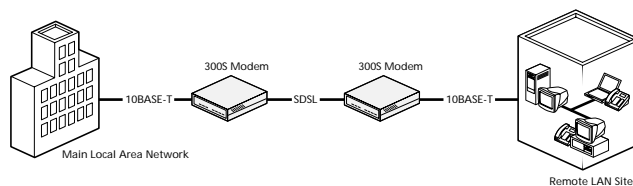


Figure 3: Campus Networks



Applications

Multi-Tenant Applications

Multi-tenant office buildings and dwelling units: service providers may use the 300S in office buildings and apartment complexes to provide in-building network services over private wiring.

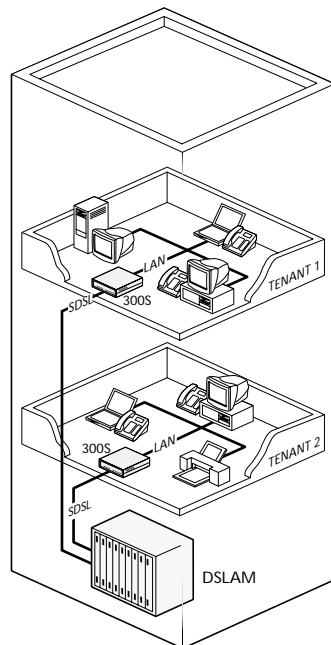


Figure 4: Multi-Tenant Applications

Internet Applications

Internet access for businesses and other organizations with small LANs: the 300S can be used with SDSL services, in lieu of a separate modem, CSU/DSU and router.

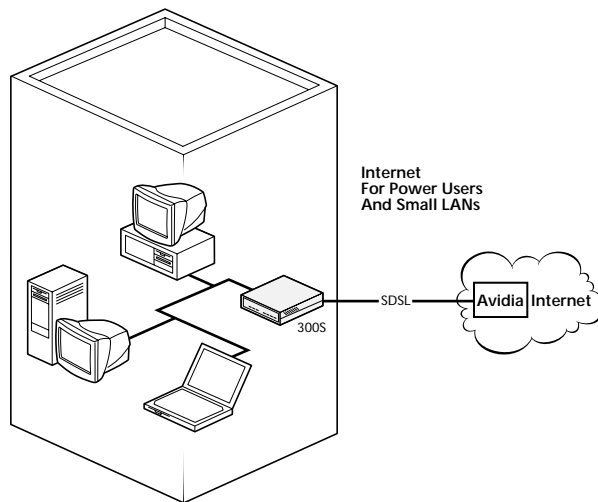


Figure 5: Business Internet Environment

Megabit Modem 300S

7100 • 100024PR

Ordering Information

Description	Dimensions (H x W x D)	Catalog Number
Megabit Modem 300S	1.3 x 6.8 x 5.5 in. (3.2 x 17.2 x 14.0 cm)	150-2100-7x*

*Note: Replace the "x" with one of the following digits:

- 2 = Include power supply for International use, no power cord
- 3 = Include power supply for North American use, North American power connector/cord
- 4 = Include power supply for European use, European power cord
- 5 = Include power supply for European use, UK/Ireland power cord.

LEDs	Power LAN: Link, Tx, Rx, Collision SDSL: Sync, Tx, Rx, Margin
LAN Interface	10BASE-T (802.3i) Ethernet Connector: RJ-45
SDSL WAN Interface	Rate-selectable, single-pair, high-speed DSL capable of full duplex symmetric operation up to 2.048 Mbps Rate-selectable at the following rates: 128 kbps, 384 kbps, 768 kbps, 1.024 Mbps, 1.280 Mbps, 1.563 Mbps, 1.792 Mbps, 2.048 Mbps (rotary switch for rate setting) Connector: RJ-11
Internetworking	High-performance Ethernet bridging Dynamically learns and ages up to 8,192 addresses
Power Requirements	100-240 VAC, 50/60 Hz, 0.2 A
Operating Requirements	Temperature: 32°F to 122°F (0°C to 50°C) Relative Humidity: up to 95% non-condensing Altitude: between -200 and 13,000 ft (-61 to 3,962m)
WAN Protocols	Ethernet over HDLC (frames) over SDSL Firmware upgradable from Avidia System platforms over the SDSL link
Weight	1.4 lbs (.63 kg)



Web Site: www.adc.com

From North America, Call Toll Free: 1-800-366-3891 • Outside of North America: +1-952-938-8080 Fax: +1-952-946-3292
For a complete listing of ADC's global sales office locations, please refer to our web site.

ADC Telecommunications, Inc., P.O. Box 1101, Minneapolis, Minnesota USA 55440-1101

Specifications published here are current as of the date of publication of this document. Because we are continuously improving our products, ADC reserves the right to change specifications without prior notice. At any time, you may verify product specifications by contacting our headquarters office in Minneapolis. ADC Telecommunications, Inc. views its patent portfolio as an important corporate asset and vigorously enforces its patents. Products or features contained herein may be covered by one or more U.S. or foreign patents.

