

Campus-RS Star

Central Site SDSL Concentrator



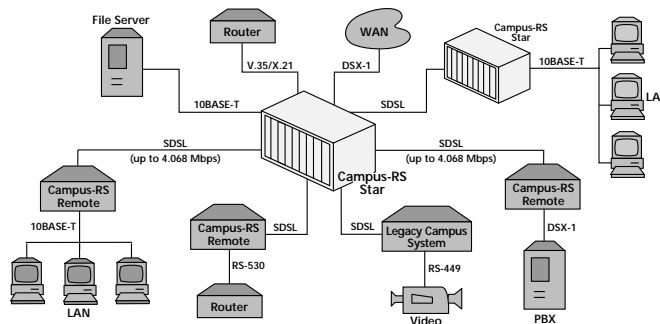
The Campus-RS™ Star provides a central site platform for aggregating multiple SDSL connections. The Campus-RS Star interoperates with any combination of Campus-RS remotes or other Campus-RS Star platforms to provide support for a variety of voice, video and data applications such as LAN extension, video conferencing and PBX extensions in a private enterprise network.

Campus-RS Star and accompanying modular components – including plug-in SDSL line units, local interface modules, AC/DC power supplies and a Campus Management Unit (CMU) – provide for up to 14 concurrent network links, redundant power and SNMP-based network management. Each of the 14 slots is capable of supporting a full range of SDSL line rates up to a maximum of 4.068 Mbps (rate depends on interface card used) and a variety of local interfaces, including 10BASE-T, V.35, X.21, RS-530 and DSX-1. The Campus-RS Star includes as standard a single plug-in 110V/220V AC or -48V DC power supply with a slot for an optional back-up power supply unit. The CMU features front panel buttons and displays for configuring and monitoring each connection, as well as alarm indicators, an RS-232 console port and an AUI management port.

Features:

- Supports 14 simultaneous SDSL connections
- Scalable, modular design
- Integrated SNMP management
- Rack mountable – 19" and 23"
- Redundant power

Figure 1:
Campus-RS Star
Application



Ordering Information

Description	Dimensions (H x W x D)	Catalog Number
Campus-RS Star Chassis*	8.8 x 17.0 x 12.0 in. (22.4 x 43.1 x 30.5 cm)	150-1220-02
Campus-RS Star SDSL Line Unit	N/A	150-1159-51
100-240VAC Power Supply	N/A	150-1226-01
48VDC Power Supply	N/A	150-1226-02
Campus-RS Star Management Unit	N/A	150-1224-51

*Star Chassis includes one 100-240 VAC or 48 VDC power supply as specified at time of order.

Specifications

Chassis Hardware Four cooling fans
RS-232 SNMP/SLIP port
AUI SNMP/LLC port
Two high-density 50-pin telco connectors
14 DB-15 SDSL WAN line connectors
19"/23" rack mountable

Campus Management Unit (CMU) Plug-in module
2 x 16 LCD and push buttons
DB-9 RS-232 console port
Alarm and status indication LEDs
SNMP/UDP/IP/ICMP/ARP
BOOTP and TFTP
SLIP

Campus Power Supplies Plug-in modules (maximum two per Campus-RS Star concentrator)
AC: 110 VAC @ 60 Hz or
220 VAC @ 50-60 Hz, 100W
DC: -36 to -72 VDC

Environmental Operating Temperature: 0 to 50°C
Relative Humidity: 0 to 85%
Electromagnetic Emissions: FCC Part 15 Class A, CE
Safety Compliance: UL, CSA, CE

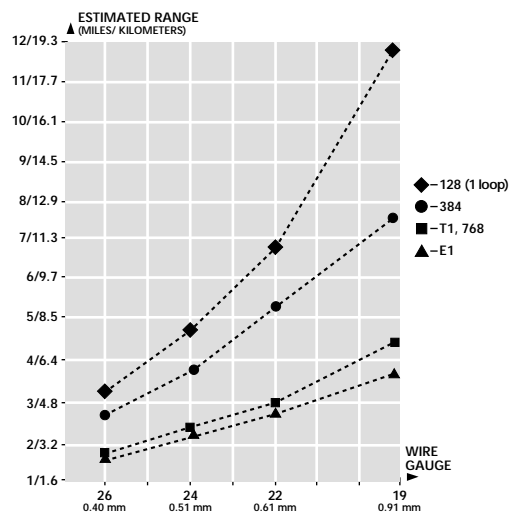


Figure 2: Campus-RS Star Reach Profile (based on 10^{-10} BER)



Web Site: www.adc.com

From North America, Call Toll Free: 1-800-366-3891 • Outside of North America: +1-952-938-8080 Fax: +1-952-946-3292
For a complete listing of ADC's global sales office locations, please refer to our web site.

ADC Telecommunications, Inc., P.O. Box 1101, Minneapolis, Minnesota USA 55440-1101
Specifications published here are current as of the date of publication of this document. Because we are continuously improving our products, ADC reserves the right to change specifications without prior notice. At any time, you may verify product specifications by contacting our headquarters office in Minneapolis. ADC Telecommunications, Inc. views its patent portfolio as an important corporate asset and vigorously enforces its patents. Products or features contained herein may be covered by one or more U.S. or foreign patents.

